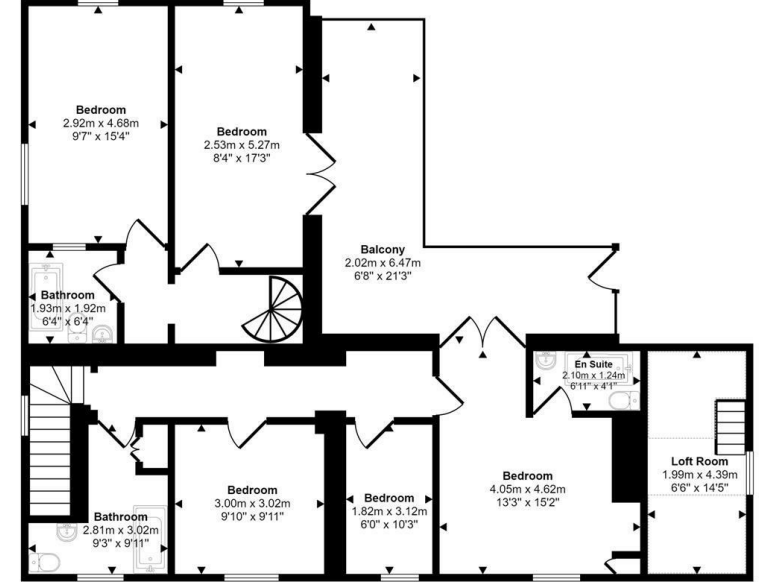


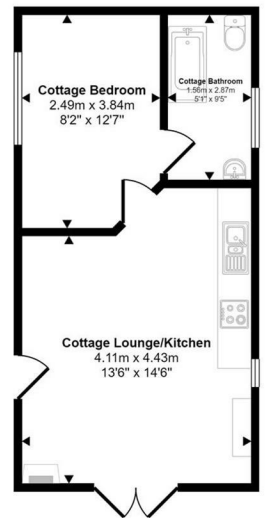
Ground Floor
Approx 105 sq m / 1127 sq ft

Denotes head height below 1.5m
This floorplan is only for illustrative purposes and is not to scale. Measurements of rooms, doors, windows, and any items are approximate and no responsibility is taken for any error, omission or mis-statement. Icons of items such as bathroom suites are representations only and may not look like the real items. Made with Made Snappy 360.



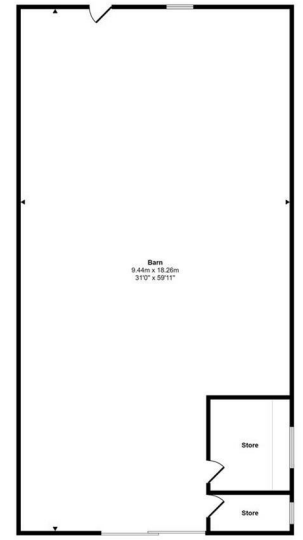
First Floor
Approx 102 sq m / 1102 sq ft

Denotes head height below 1.5m
This floorplan is only for illustrative purposes and is not to scale. Measurements of rooms, doors, windows, and any items are approximate and no responsibility is taken for any error, omission or mis-statement. Icons of items such as bathroom suites are representations only and may not look like the real items. Made with Made Snappy 360.



Annex
Approx 35 sq m / 374 sq ft

Denotes head height below 1.5m
This floorplan is only for illustrative purposes and is not to scale. Measurements of rooms, doors, windows, and any items are approximate and no responsibility is taken for any error, omission or mis-statement. Icons of items such as bathroom suites are representations only and may not look like the real items. Made with Made Snappy 360.



Outbuilding
Approx 172 sq m / 1848 sq ft

Denotes head height below 1.5m
This floorplan is only for illustrative purposes and is not to scale. Measurements of rooms, doors, windows, and any items are approximate and no responsibility is taken for any error, omission or mis-statement. Icons of items such as bathroom suites are representations only and may not look like the real items. Made with Made Snappy 360.

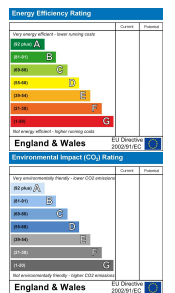


Ty Crug Abergorlech Road, Carmarthen, SA32 7JZ

- DETACHED HOUSE AND COTTAGE
- APPROX 12.9 ACRES OF LAND
- PADDOCKS AND WOODLAND
- OUTBUILDINGS
- HEATING - OIL/LPG/ELECTRIC
- FIVE BED HOUSE ONE BED COTTAGE
- FISHING ON RIVER COTHI
- STABLES
- BEAUTIFUL VIEWS
- EPC - F

£850,000

COMPUTER-LINKED OFFICES THROUGHOUT WEST WALES and Associated office in Mayfair, London



WE WOULD LIKE TO POINT OUT THAT OUR PHOTOGRAPHS ARE TAKEN WITH A DIGITAL CAMERA WITH A WIDE ANGLE LENS. These particulars have been prepared in all good faith to give a fair overall view of the property. If there is any point which is of specific importance to you, please check with us first, particularly if travelling some distance to view the property. We would like to point out that the following items are excluded from the sale of the property: Fitted carpets, curtains and blinds, curtain rods and poles, light fittings, sheds, greenhouses - unless specifically specified in the sales particulars. Nothing in these particulars shall be deemed to be a statement that the property is in good structural condition or otherwise. Services, appliances and equipment referred to in the sales details have not been tested, and no warranty can therefore be given. Purchasers should satisfy themselves on such matters prior to purchase. Any areas, measurements or distances are given as a guide only and are not precise. Room sizes should not be relied upon for carpets and furnishings.

COMPUTER-LINKED OFFICES THROUGHOUT WEST WALES and Associated office in Mayfair, London



We Say...

Ty Crug – Country Living by the River Cothi

This property is a rare find and offers a beautiful detached main house, a separate cottage, approximately 13 acres of land, and fishing on the river whilst only being 10 miles from Llandeilo and 12 miles from Carmarthen.

Nestled within about 13 acres of paddocks and woodland, Ty Crug offers the chance to live close to nature, with fishing rights on the River Cothi and a mix of land, gardens, and outbuildings. It's a place where life moves to a slower rhythm, surrounded by fields, trees, and water.

The main house is arranged over two floors, with a choice of two staircases. A stone staircase leads from the living room to three bedrooms and a bathroom, with one of the bedrooms enjoying an en suite bathroom and access to a balcony overlooking the land. A spiral staircase rises to two more bedrooms and another bathroom, giving the house a flexible and practical layout.

Downstairs, there's a living room with a fireplace, a kitchen/dining room with Aga, a second lounge, a utility room, and a shower room. A porch connects the kitchen to the outdoors, with boot room and access to loft room.

Across the country lane, the cottage sits in its own garden, with views across the River Cothi. It has its own driveway and includes a kitchen/lounge, a bedroom, and a bathroom. It's perfect for guests, family, or offering a place for holiday stays.

The barn and two further stores offer plenty of space for animals, storage, workshops, or other projects. The land itself is varied and welcoming, with paddocks, woodland, vegetable patches, a polytunnel, and ponds creating a patchwork of productive and natural spaces.

Fishing on the River Cothi brings wild trout and salmon to the doorstep. The current owners keep geese, ducks, chickens, donkeys, and sheep, and the land would be equally suited to horses, hobby farming, or simply watching the seasons unfold.

Ty Crug is a rare find: a place with space to grow, breathe, and enjoy life outdoor



DIRECTIONS

Starting from our office in Carmarthen, head west on Roman Rd towards Rhiw Babel, then turn left onto Rhiw Babel. At the roundabout, take the first exit onto Pensarn Rd, and at the next roundabout, take the second exit onto Heol Llangynnwr/A484. Continue on the A40 for about 9 minutes, passing two more roundabouts, and drive for approximately 6.5 miles. Once on the A40, turn left after 1.5 miles, then take another left after 0.7 miles. Follow the road slightly to the left for about 0.5 miles, then turn left again. After 210 feet, turn right and drive for 0.3 miles. Finally, turn right and your destination, The Cottage, will be on the left after 1.0 mile. what three words ref - ///brotherly.shining.senders

GENERAL INFORMATION

GENERAL INFORMATION

VIEWING: By appointment only via the Agents.

TENURE: We are advised Freehold

SERVICES: We have not checked or tested any of the services or appliances at the property.

TAX: Band

FACEBOOK & TWITTER

Be sure to follow us on Twitter: @ WWProps

<https://www.facebook.com/westwalesproperties/>

Any floorplans provided are included as a service to our customers and are intended as a GUIDE TO LAYOUT only. Dimensions are approximate. NOT TO SCALE.

CFP/CFP/04/25

TAKEONOK15/04/25/LLE

LOCATION AERIAL VIEW

